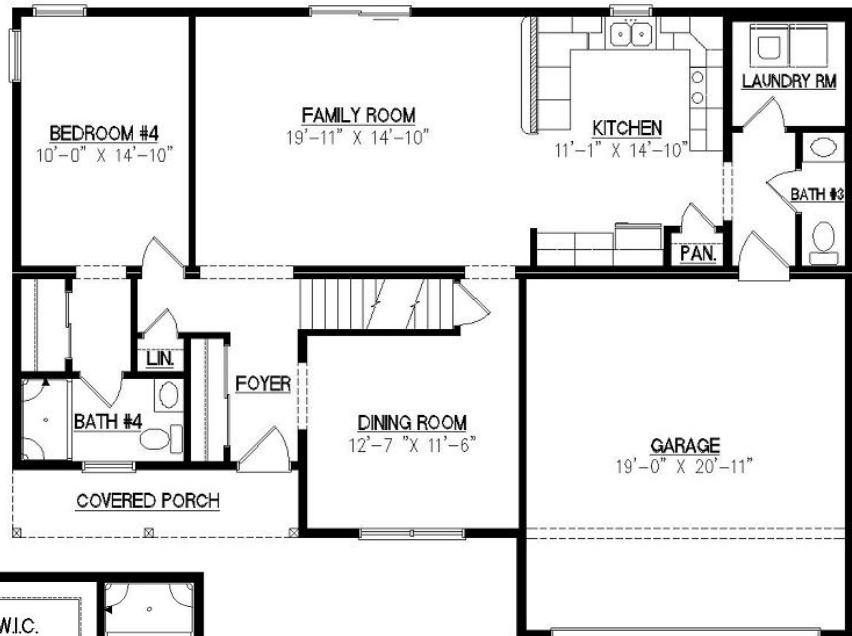


# Covington II



Note: Renderings are for illustrative purposes only and may vary per series standard specifications.

*First Floor*



*Second Floor*



**Two Story**  
**37'-7" x 50'-0"**  
**2668 SQFT**  
**3 Bedrooms / 2.5 Baths**

246 Sand Hill Road • Selinsgrove, PA 17870  
 Phone: 570-374-3280 • Fax: 570-374-1122  
[www.iconlegacy.com](http://www.iconlegacy.com)

**ICON**  
 LEGACY  
 estd 2007  
 CUSTOM MODULAR HOMES  
 LLC  
*family business. family values*